






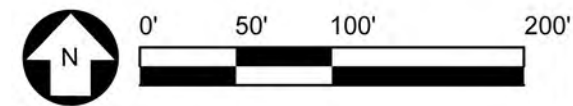
PROJECT DATA OVERALL

RETAIL BUILDINGS	
MAJOR TENANT A	30,002 SF
SHOPS	38,466 SF
TOTAL PROJECT AREA	68,468 SF

RETAIL PARKING	
TOTAL PARKING PROVIDED	370 SPACES
PARKING RATIO PROVIDED	5.40 /1,000 SF

	Signed
	Open
	Available

1 SITE PLAN
 SP.08 SCALE: 1" = 100'



CLIENT



PROJECT



JOB NUMBER
1429404

DATE
05.13.16

BY
MLH / KMC/DWH

DRAWING
SP.12 - COLORED SITE PLAN



NORTH TERRACES
 400 PERIMETER CENTER TERRACE - SUITE 650
 ATLANTA, GA 30346

Phone 770.394.1616 Fax 770.394.1314